

EUnetCCC Joint Action

European network of Comprehensive Cancer Centers

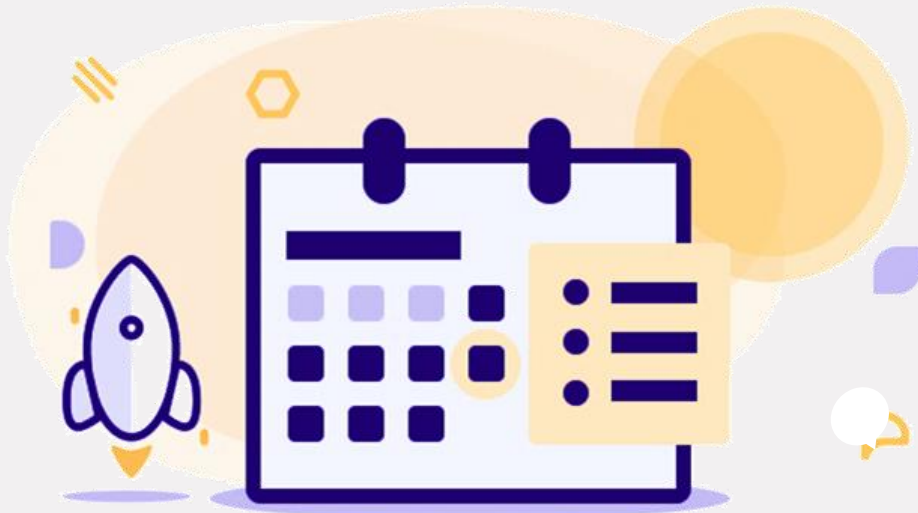
WP5 – Certification Field Test Kick-off Meeting

June 3rd 2025



AGENDA

- 01 ▶ The EUCCC Certification
- 02 ▶ The Certification Field Test
- 03 ▶ Guidance and support
- 04 ▶ Coordination, animation and feedback analysis
- 05 ▶ Let's get started !





The EUCCC Certification



EUnetCCC: an ambitious EU initiative on cancer care

Cancer, a common concern for Europe

Main challenges

Leadership and Innovation:

- Sustain leadership in research, treatment, and education
- Ensure access to latest advancements from detection to post-treatment

Equity and Quality:

- Address inequalities in diagnosis, treatment, and trial access
- Enhance outcomes research quality

Care and Research Integration:

- Integrate clinical care with research to evaluate cancer care quality effectively

Sound ambitions

- Establishing a cohesive network of CCCs across Europe is crucial
- Ensuring high-quality cancer care for all patients, regardless of location, remains a central goal
- Effectively sharing best practices, resources, and knowledge among centres is essential



EU'S RESPONSE

The EUnetCCC Joint Action, the largest European public health initiative to date, aims to enhance the level of care and reduce disparities between countries.



Budget

**90M€ EU Funding
~ 20M In-kind**



Participants from :

31 COUNTRIES



Large taskforce of :

163 PARTNERS



Duration

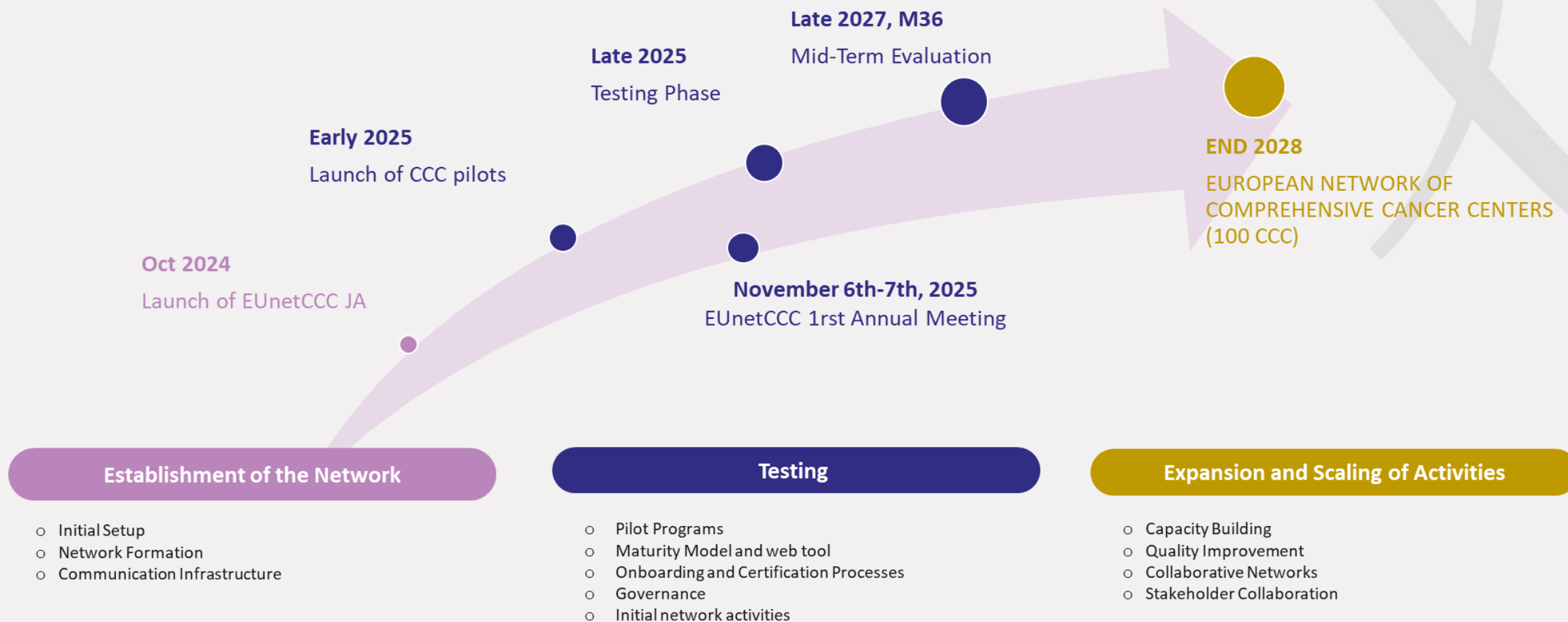
4 YEARS



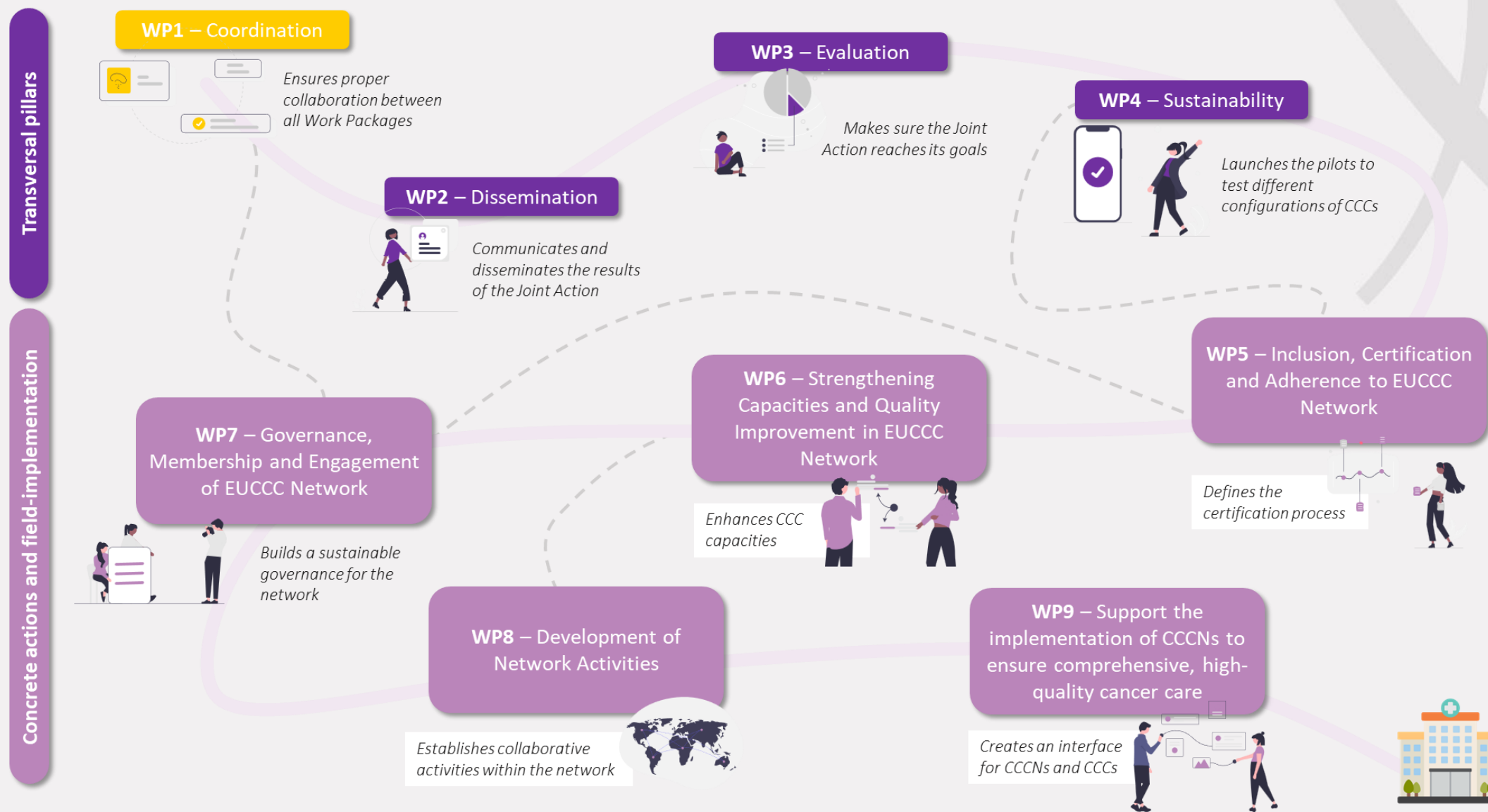
Work organisation

9 WORK PACKAGES

EUnetCCC: three main phases



EUnetCCC: 9 work packages



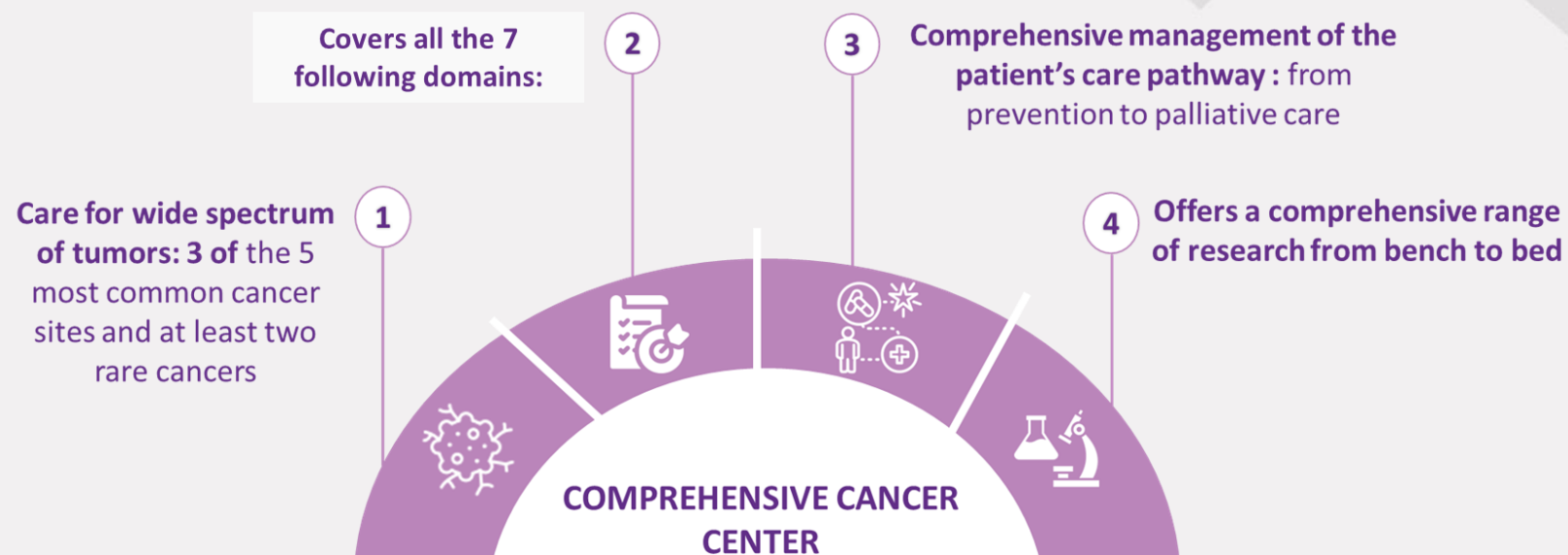
The certification of EUCCCs, a cornerstone of the project

What is EUCCC Certification?

- ➔ The project aims to **certify 100 European Cancer Centres by 2028** through a **comprehensive and inclusive scheme**
- ➔ The dynamic certification process enhances **stakeholders' engagement, quality, and capacity in seven areas**
- ➔ Based on **CraNE JA**, EUCCC uses **robust criteria** and a **structured pathway with evidence requirements**
- ➔ The **initial framework** is being released in **June 2025**; a **revised version** is due in **December 2025 post-testing**.
- ➔ **Full certification roll-out** starts **early 2026** and continues **until October 2028**.

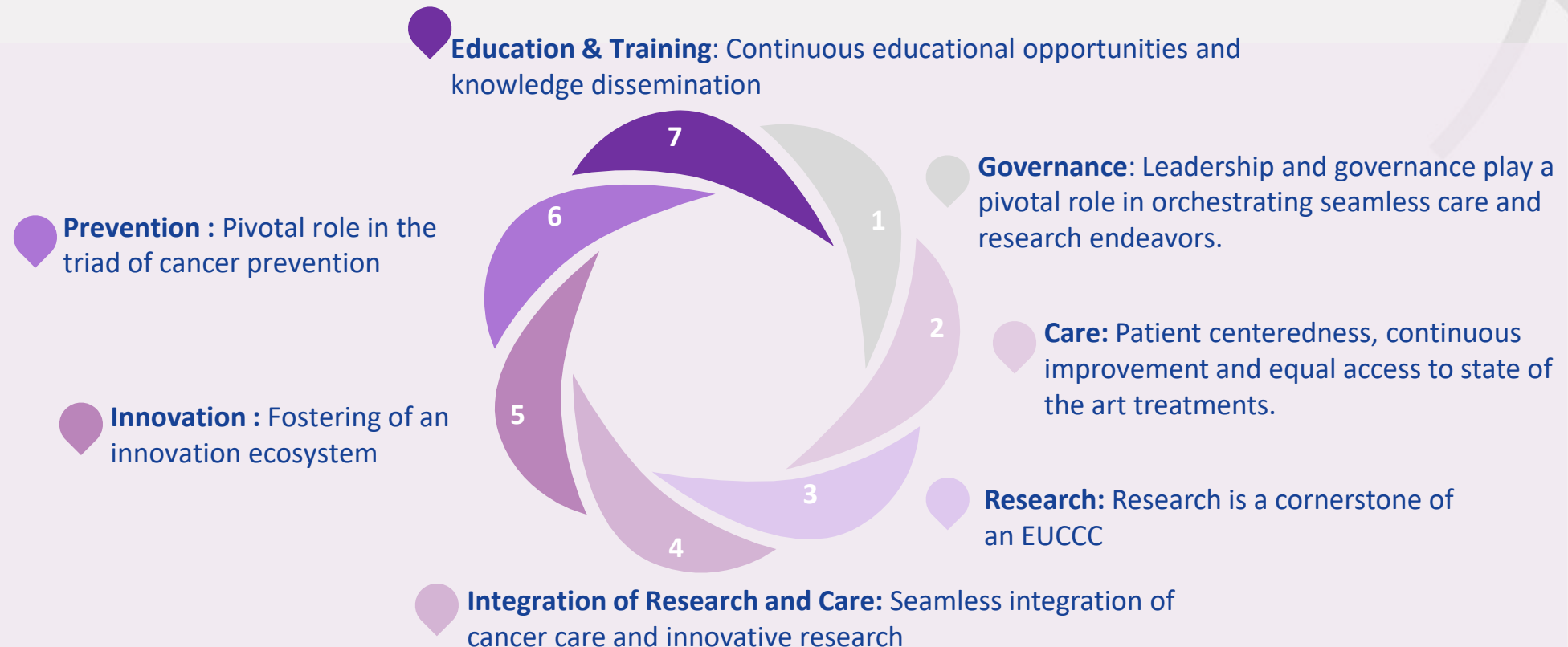
EUCCC Comprehensiveness

To achieve EUCCC certification, centres must undergo a rigorous process demonstrating high standards in cancer care, research, and governance across multiple dimensions, based on 4 principles of comprehensiveness:



What are the EUCCC certification key areas addressed?

The certification process dynamically fosters stakeholder engagement, quality improvement, and capacity building across seven key areas to encourage continuous service enhancement





The Certification Field Test



The EUCCC Certification Field Test - What are the objectives?



Refining the certification scheme by collecting structured feedback from end users (field test centers), with a focus on:

- Clarity and understanding of criteria and expectations
- Feasibility and practicality in real settings
- Usability and user-friendliness of the tools
- Relevance of the standards to diverse healthcare contexts



Ensuring a smooth roll-out of the EUCCC certification in **early 2026** by identifying gaps, simplifying processes, and validating the implementation pathway.



Providing benefits to field test centers, including:

- An **opportunity to shape the certification scheme** as active contributors,
- A chance to **use the self-assessment tool to initiate internal improvements**,
- **Priority access** to the official EUCCC roll-out,
- And **enhanced preparedness** for the future “real” certification process.

The EUCCC Certification Field Test - What will you be testing?

The field test focuses on 2 key dimensions of the future EUCCC certification framework:



THE SET OF CRITERIA AND STANDARDS

Directly inherited from the CraNE project, the complete Set of criteria and standards has been embedded into the **self-assessment for the certification prototype tool**.

This prototype also integrates:

- Evidence requirements,
- Evaluation methodologies,
- Weighting and scoring guidelines,

The test aims to assess the **clarity, feasibility, relevance,** and **practical usability** of these elements from the perspective of the end users.



THE MOST CRITICAL STEPS OF THE CERTIFICATION PROCESS

Field test sites will also test and provide feedback on the **core stages of the certification pathway**, including:

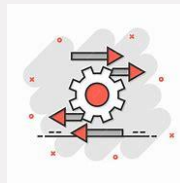
- The admission and application phase,
- The self-assessment phase,
- The on-site audit, including procedural aspects and decision-making steps

This dual approach ensures a comprehensive evaluation of both criteria and standards and the **pathway**, allowing for targeted improvements ahead of the official roll-out in 2026.

The EUCCC Certification Field Test - What will you be testing?



➔ **Self-assessment for Certification Tool Prototype**



➔ **Critical steps of the Certification Process**

Expected feedbacks on :



CLARITY



RELEVANCE



FEASIBILITY



USER-FRIENDLINESS

The EUCCC Certification Field Test - How will the testing be organised?

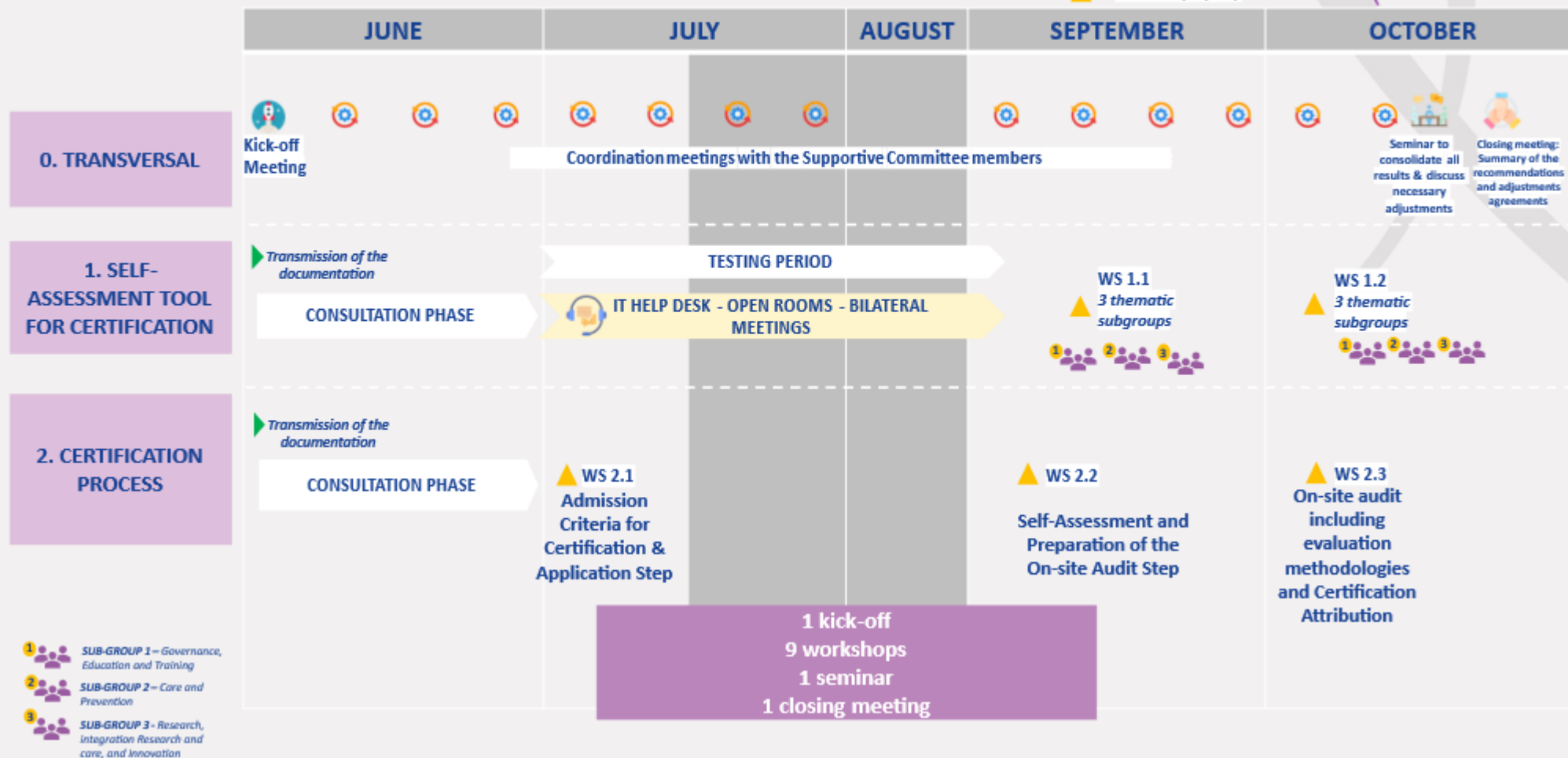
| | In-house Field Test | On-site Field Test (if needed) |
|-------------|---|---|
| PURPOSE | <ul style="list-style-type: none"> Gathering structured feedback Improving / Validating the certification framework | <ul style="list-style-type: none"> Conducting audits to evaluate the practicality and effectiveness of the certification process in real-world settings |
| PREPARATION | <ul style="list-style-type: none"> A consultation phase provides all necessary documentation to participants for review before testing. | <ul style="list-style-type: none"> Focus on organizing the visit program, including scheduling, team coordination, and overall audit flow management. |
| WORKSHOPS | <p>Online thematic workshops run from June to October:</p> <ul style="list-style-type: none"> 7 themes of the Set of criteria and standards grouped into 3 sub-groups: <ul style="list-style-type: none"> SG1 : Governance and Education/Training SG2 : Care and Prevention SG3 : Research, Innovation, Integration of Research & Care Most critical steps of the Certification process : <ul style="list-style-type: none"> Admission Criteria and the Application Step Self-Assessment and Preparation for the On-site Audit On-site Audit, including evaluation methodologies and final certification attribution | <ul style="list-style-type: none"> Audit visits |
| FOCUS AREAS | <ul style="list-style-type: none"> Workshops evaluate the clarity, comprehensibility, and relevance of standards and evidence requirements. | <ul style="list-style-type: none"> Review critical steps in the certification journey, collect feedback, identify improvements, and reinforce a shared understanding of the framework among participants |

In-house Field-test timeline

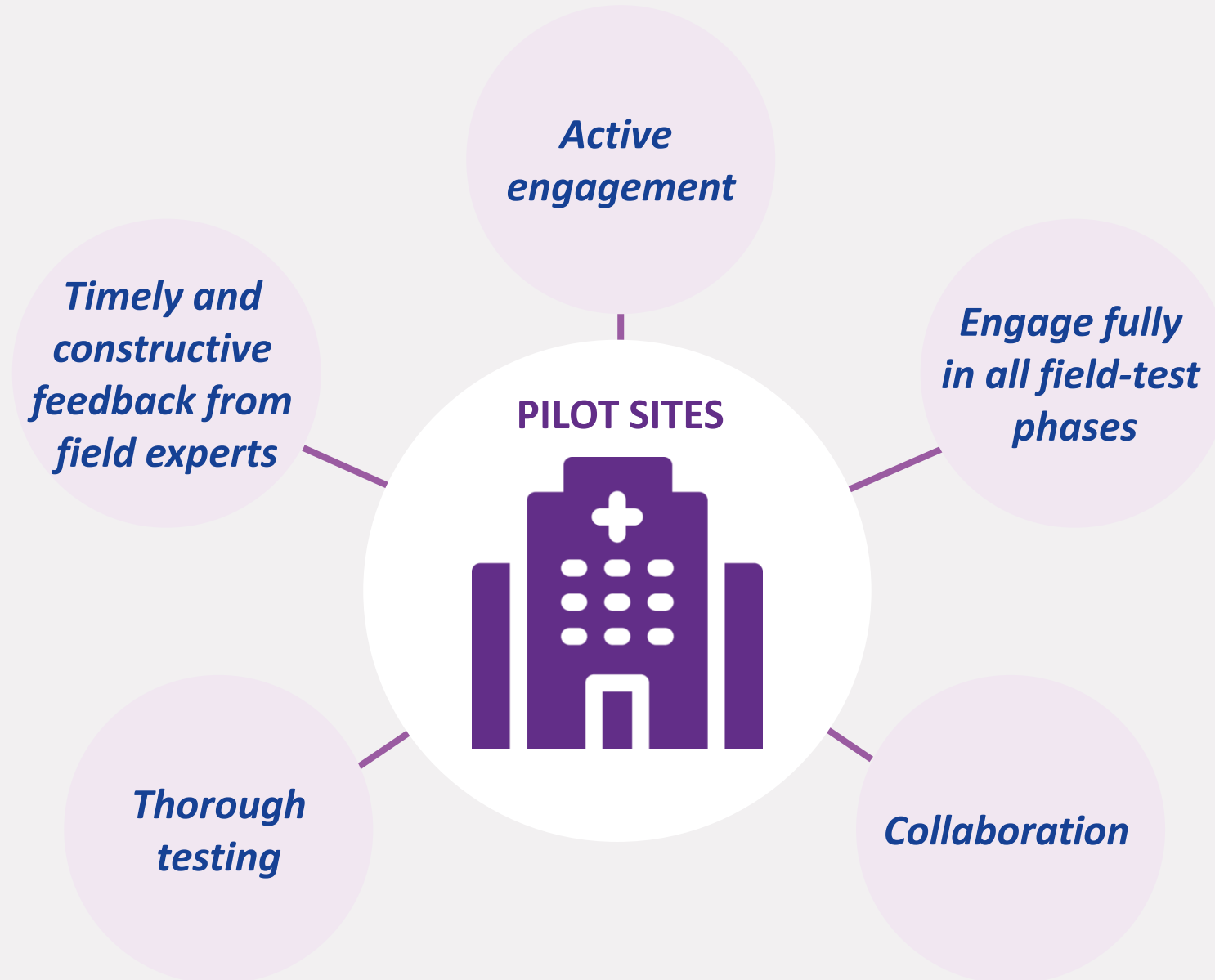
New version

Detailed Protocol: focus on the In-house Field Test

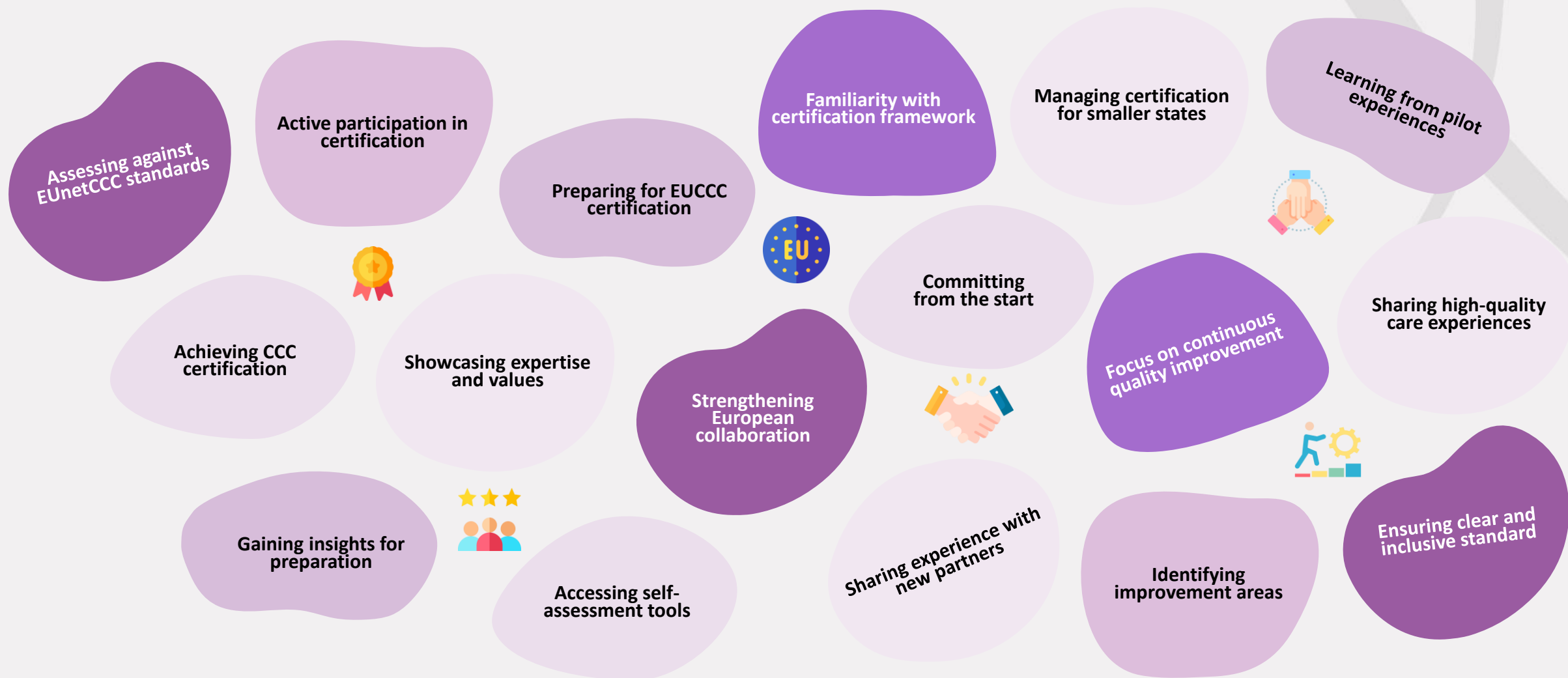
 Coordination meetings
 Workshops (WS)



What is expected from field test centers?



Why did you agree to contribute to the Certification Field Test ?



Who are the field test centers?



BELGIUM



FRANCE



GERMANY



LITUANIA



LUXEMBOURG



NORWAY



POLAND



ROMANIA



The Oncology Institute
Prof. Dr. Ion Chiricuța



SPAIN

COMPLEJO ASISTENCIAL UNIVERSITARIO DE SALAMANCA

Who are the field test centers?



BELGIUM



3,300 new cases annually

6,000 consultations per year

Brand new state of the art facilities to test the Certification Scheme



FRANCE



270 ongoing clinical trials

1,390 patients included in clinical trials

A multi-site field test centre deeply involved in cancer research



GERMANY



40,000 cancer patients

6,600 newly diagnosed patients annually

A cancer center network with a 18M catchment area

Who are the field test centers?



LITUANIA



15,730 inpatients in 2024

248 physicians

***A Cancer centre
operating since 1931***



LUXEMBOURG



**Institut
National du
Cancer**

Founded in 2015

***The coordination of an
integrated network of
Cancer Centre***



NORWAY



5 Hospitals

***Catchment area Covering
nearly 50% of Norway***

***An alliance for a complex
healthcare landscape***

Who are the field test centers?



POLAND



***180 healthcare
professionals***

***More than 5,000 teaching
hours annually***

***A key academic
institution***



ROMANIA



**The Oncology Institute
Prof. Dr. Ion Chiricuța**

***522 beds in
the clinical ward***

Founded in 1929

***A founding centre for
oncology in Europe***



SPAIN

**COMPLEJO
ASISTENCIAL
UNIVERSITARIO
D SALAMANCA**

***1,358 new oncology
patients in 2024***

28 oncology beds

***A key research institution
at a national and
European level***



Guidance and support to the Certification Field Test



Guidance to the field test centers through documentation

As field test centers, you will have access to a comprehensive set of resources to support you throughout the testing process



Field Test Booklet

A comprehensive booklet to give you all the information regarding the EUCCC certification and the Field Test.



Self-assessment tool user guide

A complete User Guide, to help you use the Self Assessment prototype. A Read me page also exists in the tool and leads to the user guide.



Set of criteria and standard manual

Provides detailed descriptions of each criteria and standard.



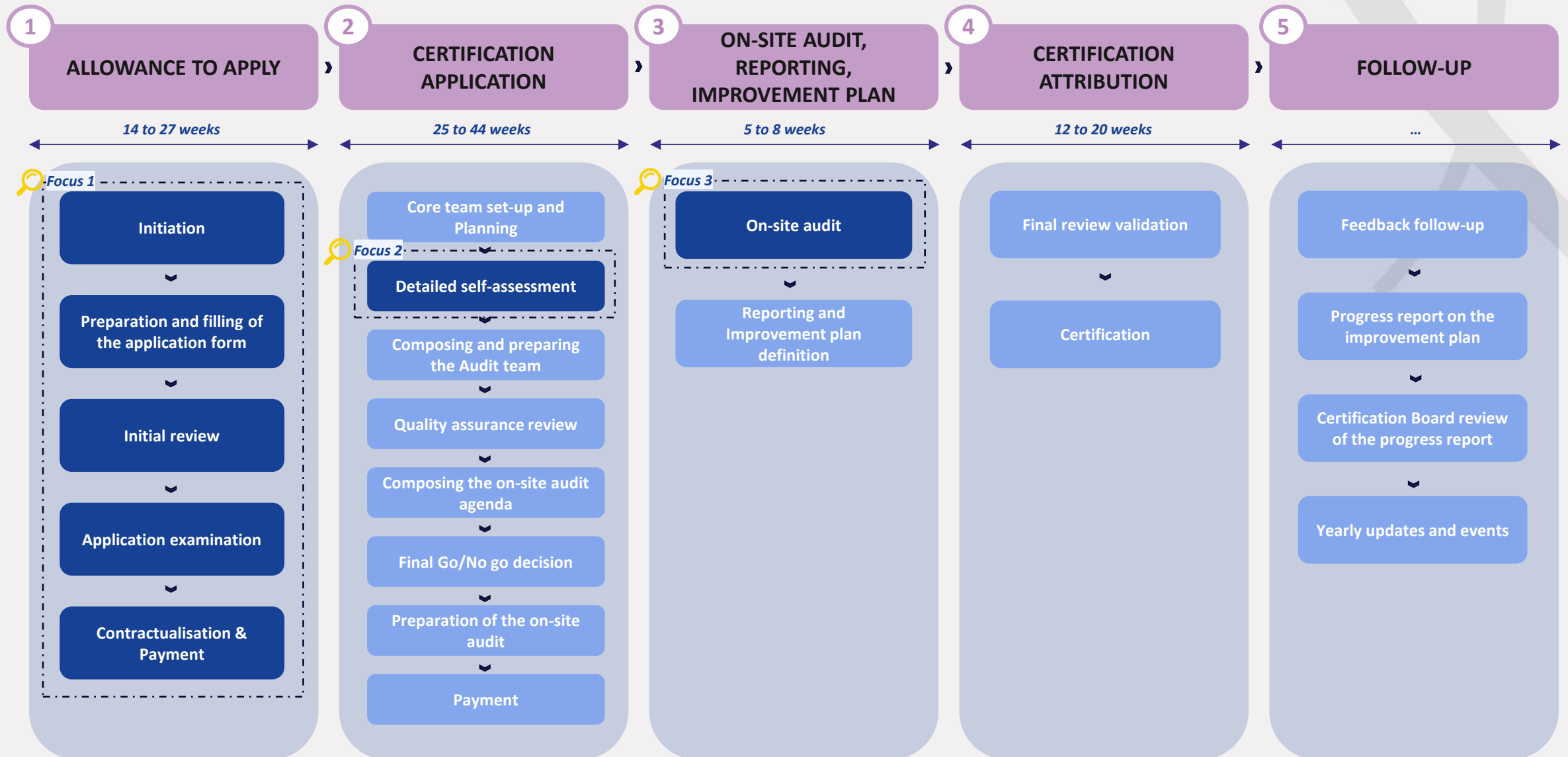
EUCCC Certification Pathway Manual

A comprehensive step-by-step explanation of the EUCCC certification journey.



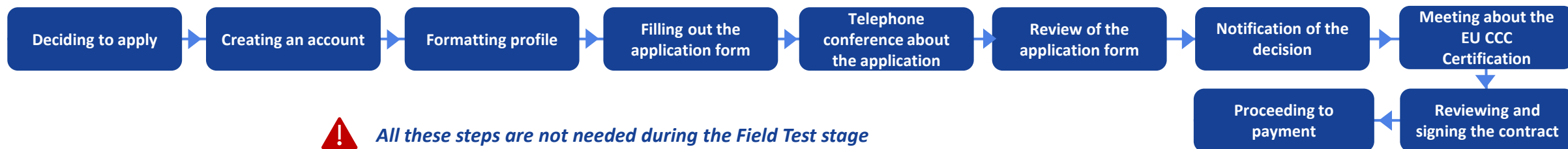
Click on each document title to access the documents

The EUCCC Certification Pathway Manual

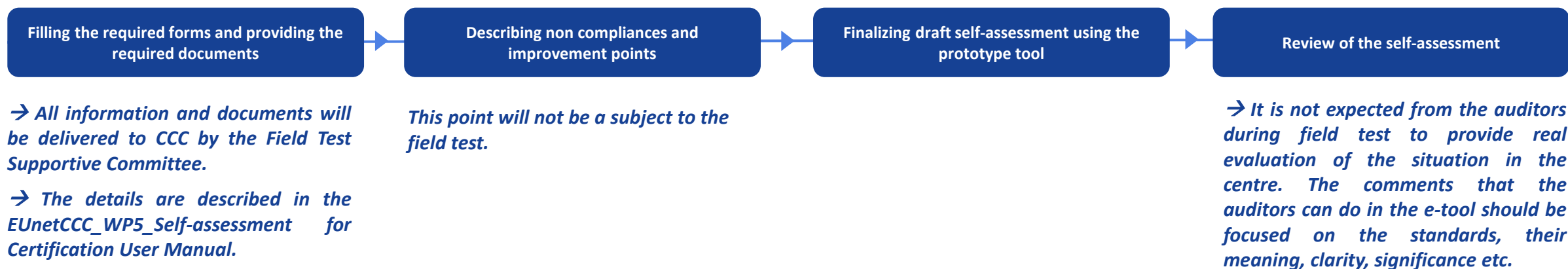


3 main critical steps of the Certification Process (1/2)

Focus 1 - Allowance to apply



Focus 2 - Self-assessment



3 main critical steps of the Certification Process (2/2)



Focus 3 – On-site Audit

Composing the on-site audit agenda

Internal preparation for the Centre and
the audit team

Observations and interviews

Final meeting at the end of the on-site
audit

→ The settings for the on-site audit will be described in the Field Test Protocol.

→ The auditors will have access to the self-assessment prototype. They will be able to see all the content provided by the centre. It is not expected from the auditors during field test to provide real evaluation of the situation in the centre. The comments that they can do in the e-tool should be focused on the standards, their meaning, clarity, significance etc.

Guidance to the field test centers through support

To ensure that field test centers are fully supported throughout the testing period, several support mechanisms will be available



IT helpdesk for the self-assessment tool

Technical assistance related to using the self-assessment for certification tool

Q&A document



Open rooms

Once a week to address any questions from the testers



Send your questions

Email address to send your questions / remarks / doubts anytime and get a fast answer

eunetccc-fieldtest-support@groups.tu-dresden.de



Bilateral meetings

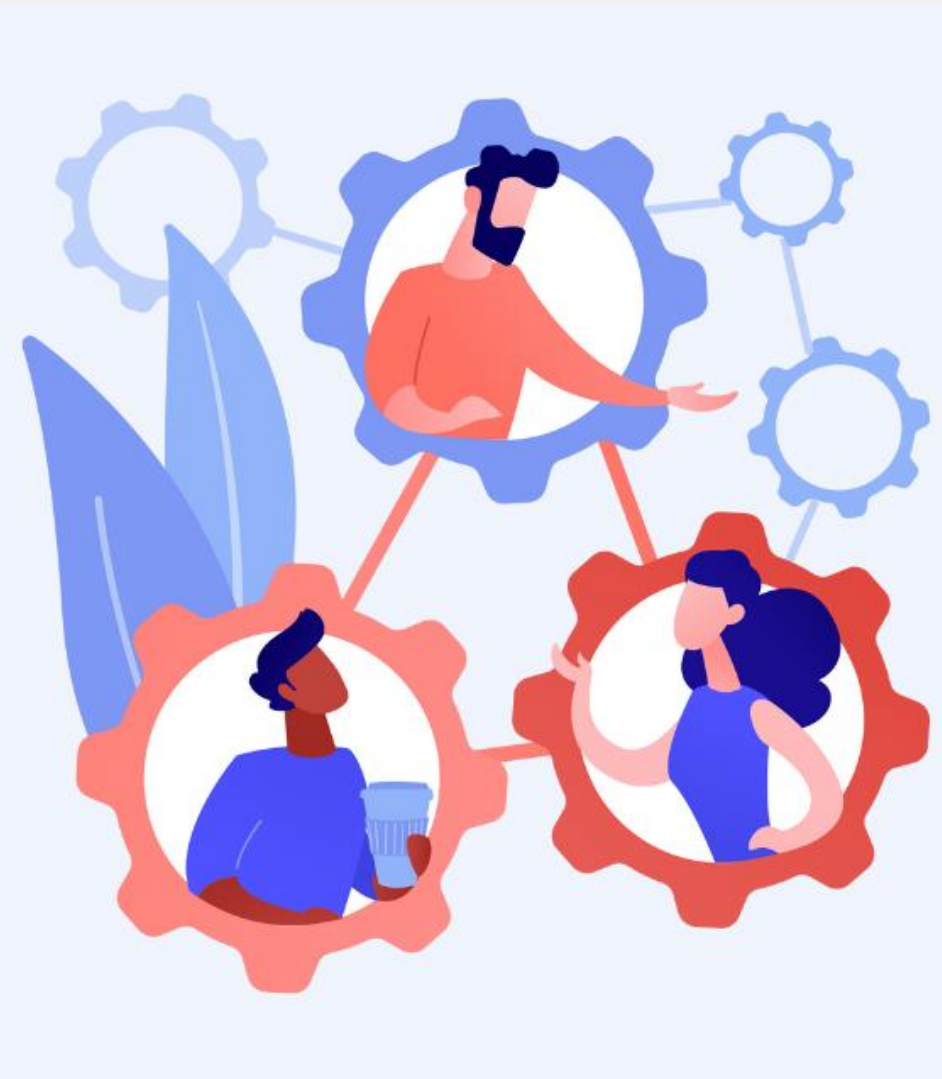
Available upon request through one-on-one meetings to receive personalised guidance based on their specific needs or challenges



Coordination, animation and feedback analysis



Support to the field-test – Field test supportive Committee



➤ A COORDINATION TEAM (ACC, Unicancer, DKG, HAS)

- 🎧 Responsible for overall strategy and decision-making

➤ FACILITATORS (TUD, OUS, WUEB, Karolinska University Hospital)

- 🎧 Animate the thematic workshops
- 🎧 Ensure smooth communication between experts and field test sites
- 🎧 Report outcomes to the Coordination Team

➤ COMMISSION MEMBERS (EXPERTS)

- 🎧 Provide thematic expertise and participate in workshops based on their area of knowledge:

For the Self-assessment Tool:

- Governance, Education & Training
- Care & Prevention
- Research, Innovation, Integration of Research & Care

For the Certification process:

- Admission Criteria & Application Step
- Self-assessment & On-site Preparation
- On-site Audit & Certification Attribution

Supportive Committee Commission members selected through a call for applications

| Name | Institution | Country |
|------------------------|--------------------------------|-----------|
| Giandomenico Russo | ACC | Italy |
| Isabelle Seksek | Unicancer | France |
| Ellen Greisshammer | DKG | Germany |
| Kim Tiede | DKH | Germany |
| Mona Krichen | HAS | France |
| Peggy Richter | TUD | Germany |
| Ingrid Jenny Guldvik | OUS | Norway |
| Arkadiusz Wierzbic | WUEB | Poland |
| Eva Jolly | Karolinska University Hospital | Sweden |
| Anastasia Balasopoulou | 1YPE | Greece |
| Elisa Mazzini | AUSL RE | Italy |
| Francesca Sampogna | ACC | Italy |
| Claudia Valverde | Vall d'Hebrón | Spain |
| Teresa Cesiuliene | VULSK | Lithuania |
| Dorota Dudek-Godeau | NIZP-PZH | Poland |
| Jean-Philippe Metges | CHU Brest | France |
| Vincent Bourbonne | CHU Brest | France |
| Stéphane Dalle | CHU Lyon | France |

Broad geographical representation ensures a diversity of perspectives

Experts selected for the workshops on the Set of criteria and standards

Governance, Education & Training

Isabelle Seksek - Unicancer
Eva Jolly - Karolinska University
Hospital
Anastasia Balasopoulou - 1YPE
Elisa Mazzini – AUSL RE
Arkadiusz Wierzbic - WUEB

Care & Prevention

Ellen Griesshammer/Kim Tiede –
DKG/DKH
Dorota Dudek-Godeau - NIZP-
PZH
Claudia Valverde - Vall d'Hebrón
Teresa Cesiulienė - VULSK
Vincent Bourbonne - CHU Brest

Research, Innovation, Integration of Research & Care

Giandomenico Russo - ACC
Ingrid Jenny Guldvik - OUS
Francesca Sampogna - ACC
Stéphane Dalle - CHU Lyon
Jean-Philippe Metges - CHU Brest

Members dedicated to the cancer field contribute expertise from care, clinical research, governance, and health system evaluation.

Experts selected for the workshops on the Certification Process

Admission Criteria for Certification & Application Step

- WP5 members
- Coordination and other WP members
- Experts from the Supportive Committee

Self-Assessment and Preparation of the On-site Audit Step

- WP5 members
- Experts from the Supportive Committee

On-site audit including evaluation methodologies and Certification Attribution

- WP5 members
- Experts from the Supportive Committee

Support to the field-test – Feedback collection and analysis



STRUCTURED FEEDBACK GATHERING

- Utilizes **surveys and evaluation tools** within the self-assessment prototype.
- Enables **real-time, contextualized input** on clarity, usability, and relevance.



QUALITATIVE FEEDBACK

- Collected during thematic workshops and through continuous **exchanges** with the coordination and facilitation teams.



ANALYSIS AND RECOMMENDATIONS

- Coordination Team collaborates with facilitators and experts **to review feedback.**
- Identifies **strengths and areas for improvement** for the certification scheme.



SEMINAR (NOVEMBER 2025)

- Presents **consolidated feedback and key findings.**
- Validates **adjustments** and aligns on the **improved Certification Framework.**
- Framework finalization by end of 2025, roll-out in early 2026.



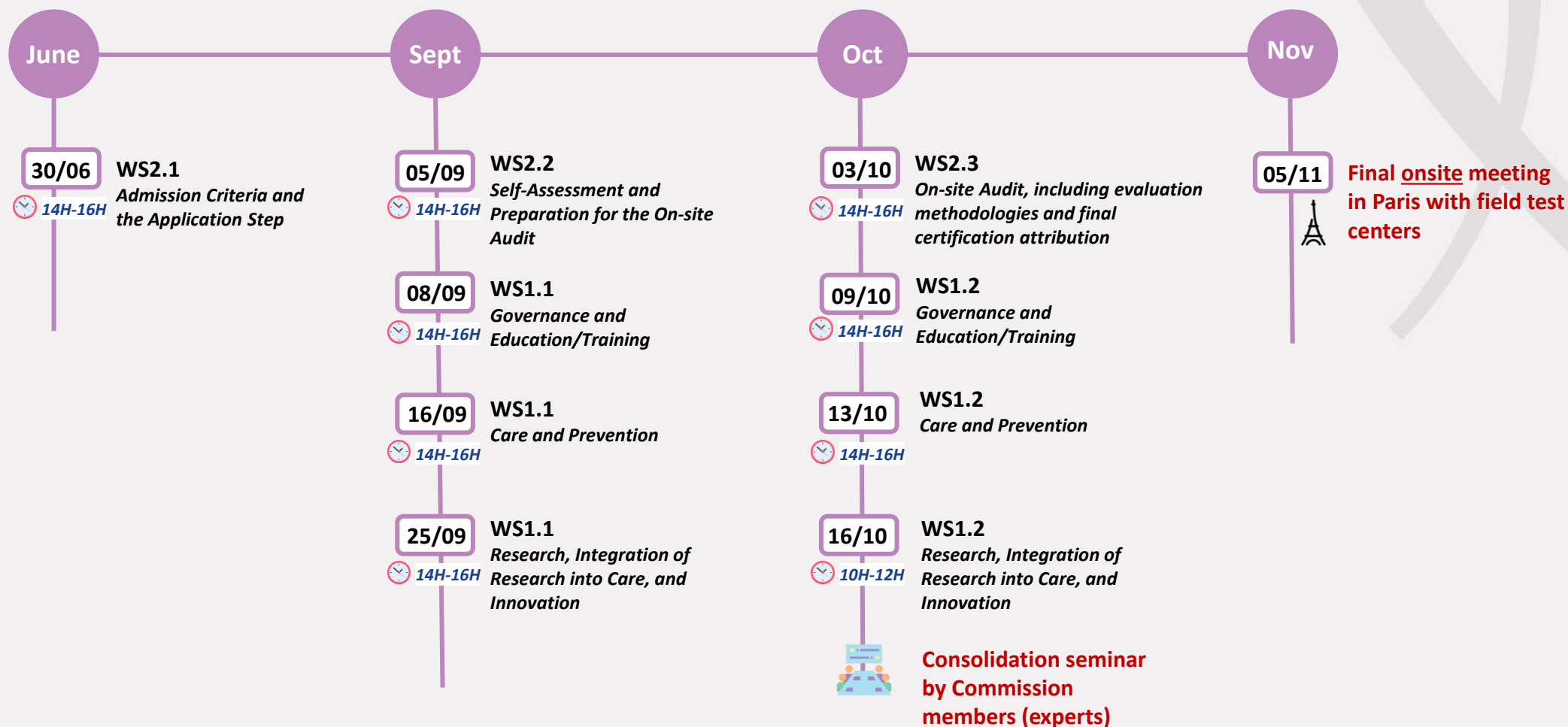
Let's get started !



Online workshops



Invitations will be sent after the meeting



You will receive tomorrow the login details to access the self-assessment tool
(1 per field test center that you can share internally with as many as users as needed)

THANK YOU FOR YOUR ATTENTION

Any questions ?